



WiFi Stick Datalogger Quick Installation Manual

Version: 3.6



Delivery Content

- 1 WiFi stick
- 1 WiFi Antenna
- 1 Quick Installation Manual

1 Install

1.1 Install the datalogger

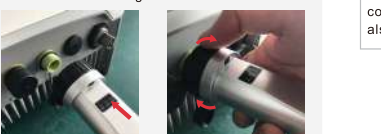
Connect the datalogger to the corresponding 4-pin COM port of the inverter. A Solis 5K inverter is used here as an example. Please follow the instructions below:



Match the joint

Install the datalogger:

1. Install the antenna to the datalogger.
2. Match the joint, and then insert the datalogger to the inverter COM port.
3. Rotate the black ring in clockwise.

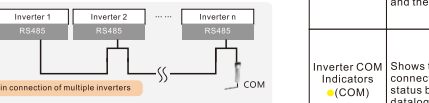


NOTE

Only rotate the black ring at the connection end, not rotate the silver cover.

1.2 Install with multiple inverters

If you need to collect data from multiple inverters, please follow the inverter user manual to establish a communication connection with the inverter using the RS485 communication cable in a "daisy chain" manner.



After the datalogger is installed on the inverter, if the inverter is powered on, you need to set the inverter slave address, the default slave address of the inverter is 01, and each inverter on the communication circuit needs to be assigned with different slave address (like 01, 02, 03, 04...).

NOTE

The device must be installed away from the strong magnetic field produced by large electrical appliances such as microwave oven, refrigerator, telephone, metal walls, etc. Otherwise, the communication quality may be affected. It may also be affected by lightning storm.

2 LED and Button

LED Lights Status:

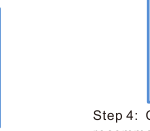
LED indicators	Description	LED Status	Meanings
Internet Indicators (NET)	Shows the connection status between the datalogger and the server.	Flashing	Trying to connect with server
		ON	Successfully connected
		OFF	Abnormal connection
Inverter COM Indicators (COM)	Shows the connection status between datalogger and the inverter.	Flashing	Trying to connect with inverter
		ON	Successfully connected
		OFF	Abnormal connection
Power Indicator (PWR)	Shows the power supply status of the datalogger.	ON	Datalogger is powered up normally
		Flashing	Trying to connect with server
		OFF	Datalogger is powered up abnormally

Button Instruction:

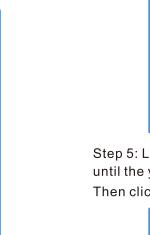
- The [RESET] button on the back is used for connection.
- Short press will send the data immediately.
- Long press for 5 seconds will enter into config mode for connection router.
- Long press for 10 seconds will reset the connection.
- The three constantly ON LED lights indicate the datalogger is working normally.

3 WiFi Configuration

Step 1: Use your phone to scan the QR code to download and register the Solis Cloud APP. Or directly download from APP Store or Google Play Store by searching "Solis Cloud".



Step 2: If it is a new datalogger, please configure it first, then click the "WiFi Configuration".



Unlogged account, click on "More Tools" and select "WiFi Configuration".

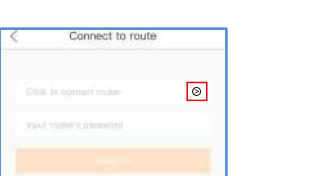


If you have logged in, please click "Tool" to enter "WiFi Configuration".

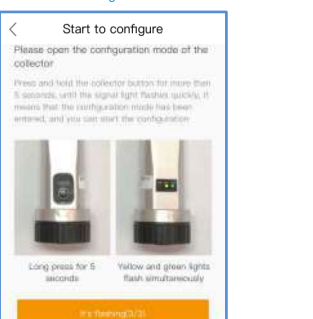
Step 3: Manually input datalogger SN or Scan the SN on the datalogger.



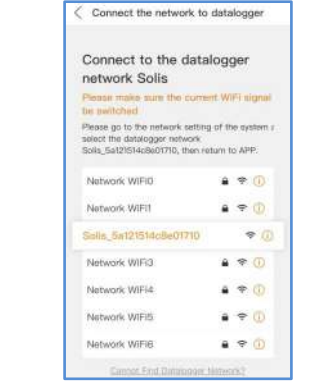
Step 4: Choose the configuration method, recommended click "Browser Configuration".



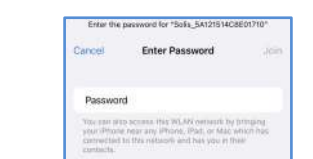
Step 5: Long press the "Reset" button for 5 seconds until the yellow and green LEDs are quickly flashing. Then click the "It's flashing".



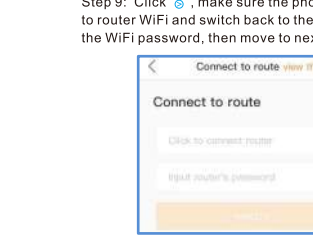
Step 6: Connect to the datalogger network Solis.



Step 7: The wireless device (mobile phone or laptop) connects to the datalogger hotspot (Solis_serial number). The Password is 123456789.



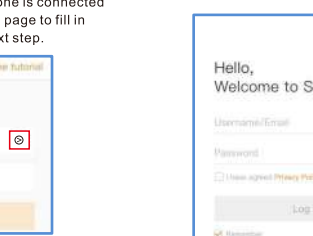
Step 8: After that, return to APP.



Step 9: Click "o", make sure the phone is connected to router WiFi and switch back to the page to fill in the WiFi password, then move to next step.

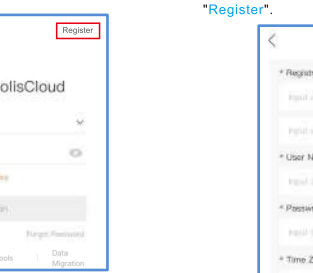


Step 10: Configuration Complete.

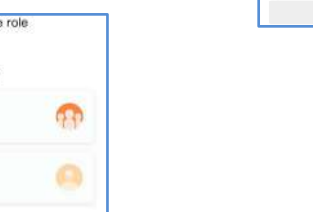


4 Create the Solis Cloud Account

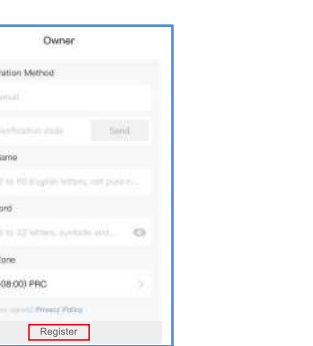
Step 1: Click the "Register".



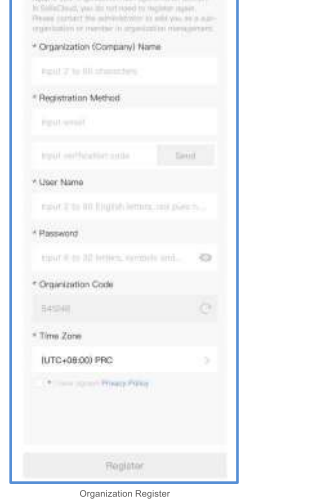
Step 2: Select Owner or Organization for email address registration.



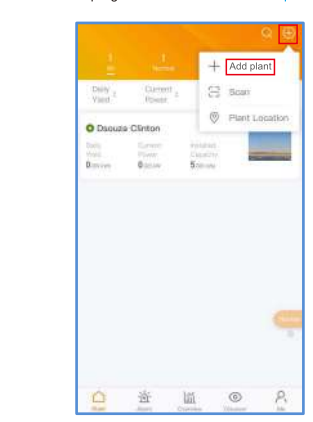
Step 3: Enter the email to get the verification code, then enter your account and password, last click the "Register".



Step 4: Click "View plant" to enter the plant homepage, then add the datalogger.



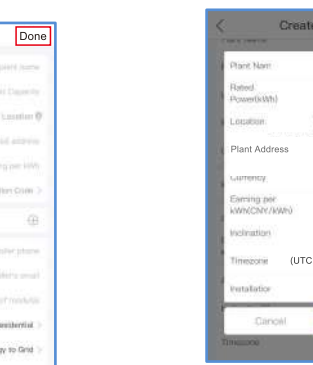
Step 1: Enter the main page of Solis Cloud APP, click "+" at the top right corner and select "Add plant".



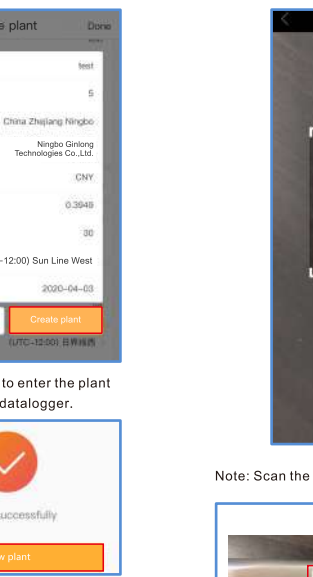
Step 2: Input the information of the plant as required.



Step 3: Confirm the plant information. Then click "Done".



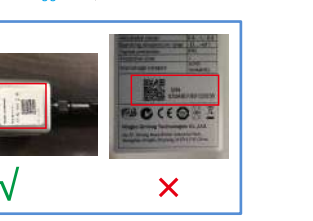
Step 4: Click "View plant" to enter the plant homepage, then add the datalogger.



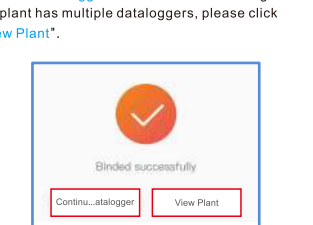
Step 5: Scan the datalogger SN QR code or manually input it.



Note: Scan the datalogger SN, NOT the inverter SN.



Step 6: Plant creation succeeds. Click "Continue...atalogger" to check the monitoring data. If the plant has multiple dataloggers, please click "View Plant".



6 FCC Certification

This device complies with part 15 of the FCC Rules. Operation is subject to the following two conditions: (1) This device may not cause harmful interference, and (2) this device must accept any interference received, including interference that may cause undesired operation.

FCC warning:
Any Changes or modifications not expressly approved by the party responsible for compliance could void the user's authority to operate the equipment.

Note:
This equipment has been tested and found to comply with the limits for a Class B digital device, pursuant to part 15 of the FCC Rules. These limits are designed to provide reasonable protection against harmful interference in a residential installation. This equipment generates uses and can radiate radio frequency energy and, if not installed and used in accordance with the instructions, may cause harmful interference to radio communications. However, there is no guarantee that interference will not occur in a particular installation.

If this equipment does cause harmful interference to radio or television reception, which can be determined by turning the equipment off and on, the user is encouraged to try to correct the interference by one or more of the following measures:
-Reorient or relocate the receiving antenna.
-Increase the separation between the equipment and receiver.
-Connect the equipment into an outlet on a circuit different from that to which the receiver is connected.
-Consult the dealer or an experienced radio/TV technician for help.

This equipment complies with FCC radiation exposure limits set forth for an uncontrolled environment. This equipment should be installed and operated with minimum distance 20cm between the radiator & your body.

Contact
Please contact us if you have any technical problems in terms of the product. Please provide the following information as well:
◆ Inverter SN
◆ Datalogger SN
◆ Problem Description

Ginlong Technologies Co., Ltd.

No. 57 Jintong Road, Binhai Industrial Park, Xiangshan, Ningbo, Zhejiang, 315712, P.R.China.

Tel: +86 (0)574 6578 1806

Fax: +86 (0)574 6578 1606

Email: info@ginlong.com

Web: www.ginlong.com